



INDUSTRIAL BODYSHOP

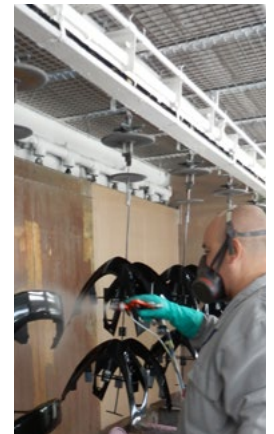
FINISHES

CLEARCOAT/ENAMELS	Nozzle	Aircap
4100 XTREME Suction	1.6 / 1.8	96 / XT01
3300 GTO Suction	1.6 / 1.8	EPA
4100 XTREME Pressure	1.0 / 1.2 / 1.4	777 / XT01B
3300 GTO Pressure	1.0 / 1.2	EPA
Mini XTREME Pressure	1.0 / 1.2	miniEPA
4100 XTREME Gravity	1.4 / 1.6	96 / XT01
3300 GTO	1.4 / 1.6	EVO
3300 GTO CAR	1.3 / 1.4	TECH
Mini XTREME Gravity	1.2	miniEPA
BASECOATS	Nozzle	Aircap
4100 XTREME Suction	1.4 / 1.6	96
	1.6	XT01
3300 GTO Suction	1.4 / 1.6	EPA
4100 XTREME Pressure	0.8 / 1.2	XT03 / XT01B
3300 GTO Pressure	1.0 / 1.2	HVLP / EPA
Mini XTREME Pressure	0.8 / 1.0 / 1.2	miniHVLP / miniEPA
4100 XTREME Gravity	1.3 / 1.4	96 / XT03 / XT01
3300 GTO/3300 GTO CAR	1.4	HVLP / EPA / TECH
Mini XTREME Gravity	1.0 / 1.2	miniEPA

Parts painting,
small amounts of paint

Production,
large pieces, complete vehicles
and/or high consumption of paint

Retouching,
lettering and small
repairs



Parts painting and small
surfaces. Max. 1 liter of paint

High production,
passenger vehicles and
any basecoat process

Small retouches and repairs,
several colors



MIDDLE/HIGH PRODUCTION	Applications
652 / 653 INOX	Applications that do not exceed 25/50L per working day
6110 INOX	Small pieces or variety of colors

CONTINUOUS PRODUCTION	Applications
DM 1/400 Double outlet	Double simultaneous application in oversized vehicles
DM 1/400	Very high air flow, primers and finishes, abrasives
DM 1/300	High air flow, light primers and finishes



w w w . s a g o l a . c o m

PRIMERS

PRIMER/FILLER	Nozzle	Aircap
4100 XTREME Suction	1.8	96 / XT01
3300 GTO Suction	1.8	EPA
4100 XTREME Pressure	1.4	765 / 3030 / XT01B
3300 GTO Pressure	1.4	HVLP / EPA
4100 XTREME Gravity	1.8 / 2.2	XT03 / 96 / 64S
3300 GTO	1.8	HVLP / EPA

Parts painting,
small surfaces

High production and large
surfaces, complete vehicles

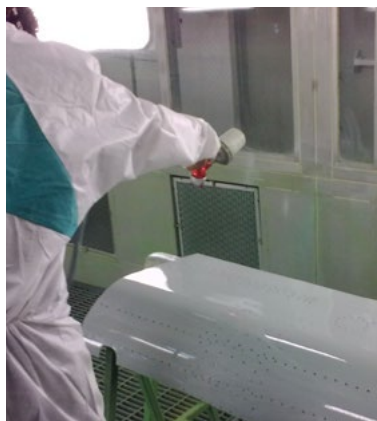
Repairs and retouching,
small parts



ANTICORROSIVE PRIMER	Nozzle	Aircap
4100 XTREME Pressure	1.8 / 1.8 CT	XT03 / XT01B
3300 GTO Pressure	1.8	HVLP / EPA
4100 XTREME Gravity	2.2 / 2.5	64S
3300 GTO	2.2	64S

Chassis painting and large structures,
continuous production

Small parts, retouching and
repairs



MIDDLE/HIGH PRODUCTION	Applications
652 / 653 INOX	Applications that do not exceed 25/50L per working day
6110 INOX	Small pieces or several colors

CONTINUOUS PRODUCTION	Applications
DM 1/400 Double outlet	Double simultaneous application in oversized vehicles
DM 1/400	Very high air flow, primers and finishes, abrasives
DM 1/300	High air flow, light primers and finishes

AIR CONDITIONING

FINISHES	Applications
5200X	Mechanical filtering, two stage, 8 μ + 0,01 μ coalescent
4220X	Mechanical filtering, two stage, 20 μ + 0,01 μ coalescent
PRIMERS	Applications
479 Plus	Mechanical filtering (40 μ), water condensates and oil
CONDITIONING	Applications
Pack 6000X Air Heater	Air heating, regularity in the application, winter use

